

## STARK 3810 S Brushcutter



### Documents

Engine

Ignition system

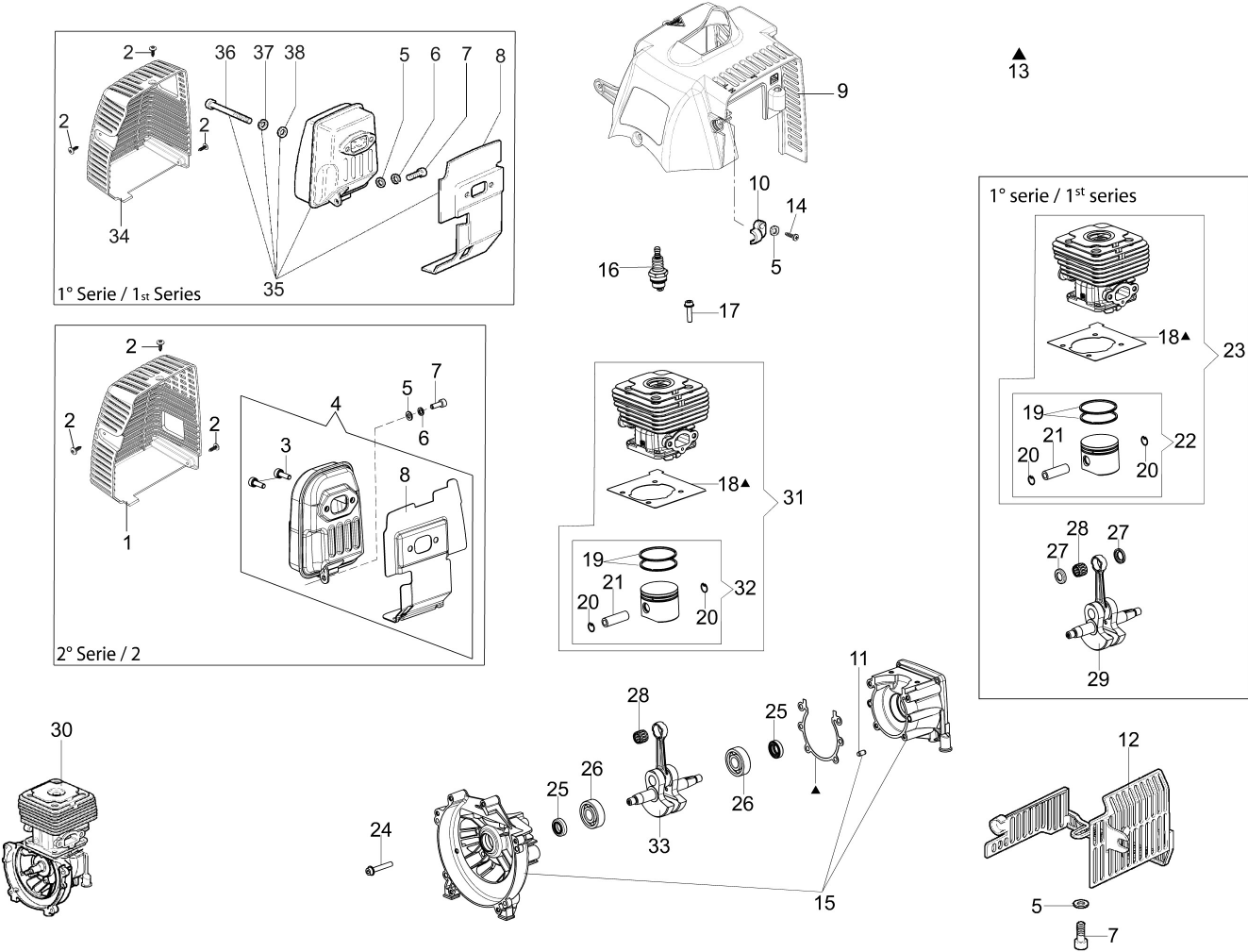
Tank and air filter

Transmission

Carburettor WT-1099

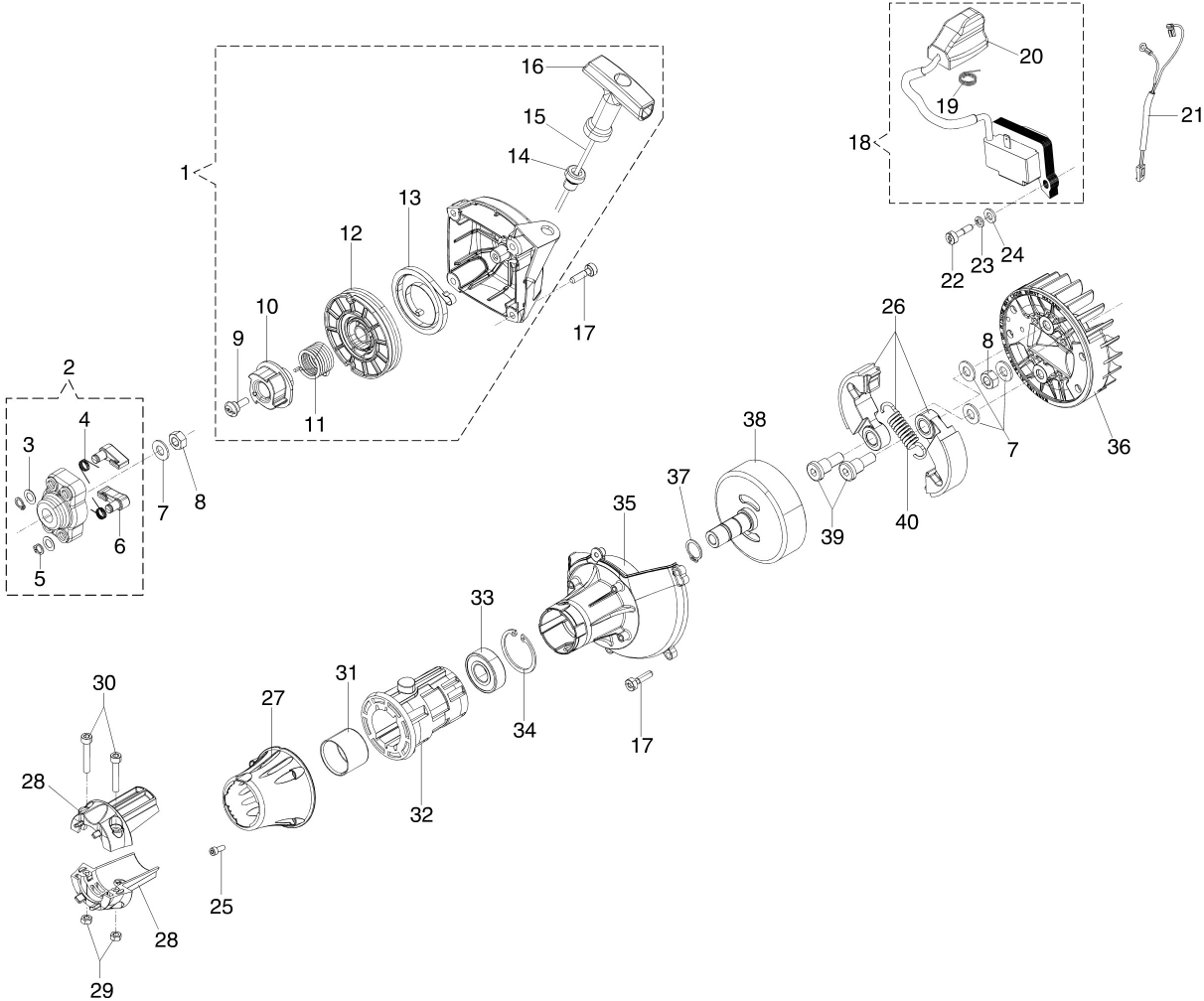
Accessories

Illustrated part list (Head "Load & Go" D.130)



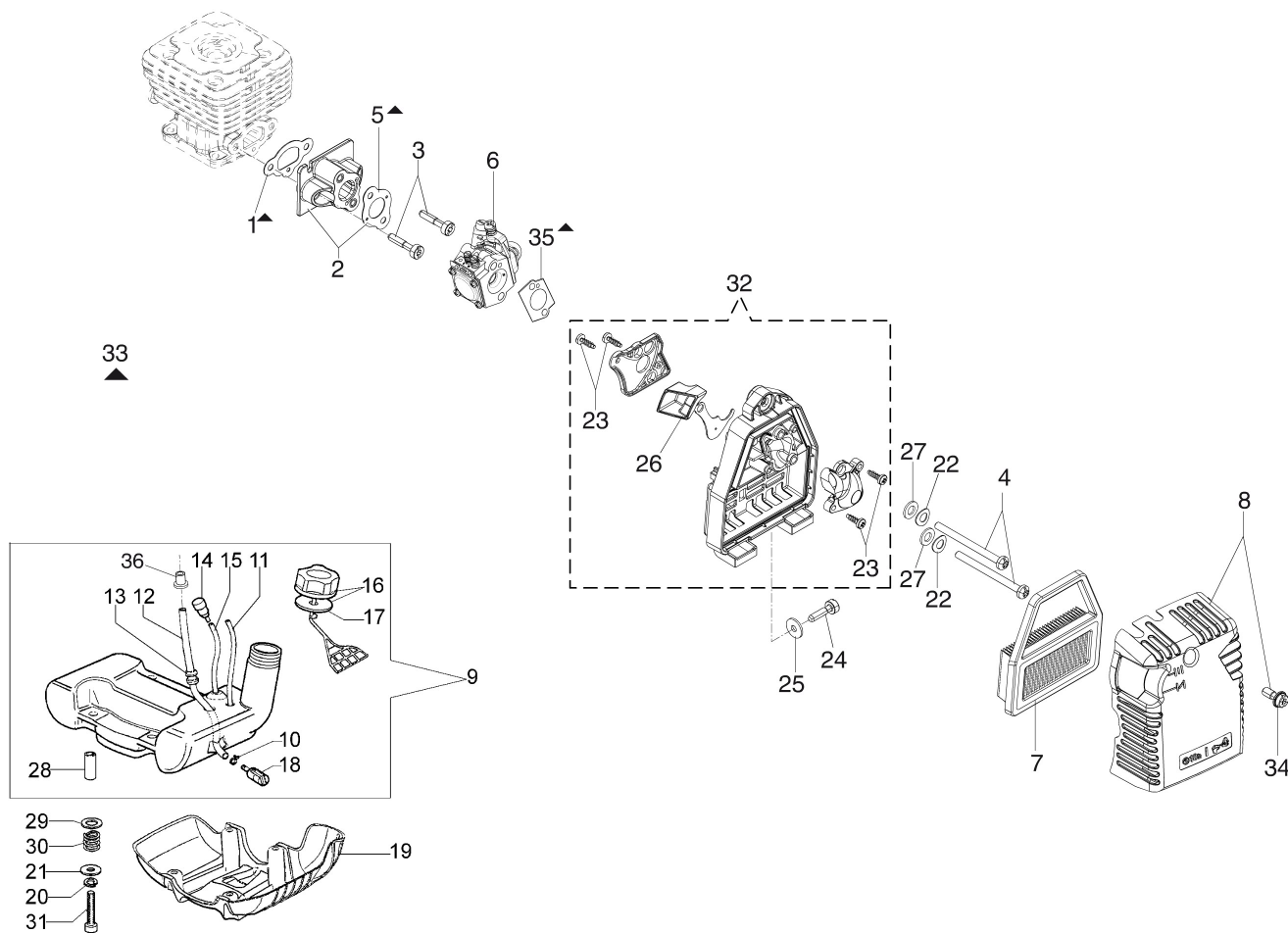
## Illustration Engine

Ref.Nu	Qty	Part number	Description	Validity from	Validity till	Notes	Bulletin
1	1	61330168R	Muffler cover				
2	3	3960121R	Screw				
3	2	005100906AR	Screw				
4	1	61330192CR	Complete muffler				
5	3	3916005R	Washer				
6	1	3819006R	Washer				
7	3	3801010R	Screw				
8	1	61330125R	Deflector				
9	1	61330127AR	Cylinder cover				
10	1	61200064R	Stopper				
11	4	3023008R	Plug				
12	1	61330054BR	Guard				
13	1	61202038BR	Gasket set				
14	1	3960069AR	Screw				
15	1	61330067	Crankcase assy				
16	1	3055115R	Spark plug				
17	4	094000101R	Screw				
18	1	61350272R	Gasket				
19	2	4196166R	Piston ring				
20	2	004900061R	Ring				
21	1	50110047R	Piston pin				
22	1	50110066A	Piston assy		SN 8608113965		BT3-138-05/18
23	1	61212005B	Complete cylinder Ø38				BT3-138-05/18
24	4	3860096R	Screw				
25	2	094000099R	Seal ring				
26	2	094000006R	Bearing				
27	2	50110043AR	Spacer		SN 8608113965		BT3-138-05/18
28	1	50110044R	Bearing				
29	1	61200001R	Crankshaft		SN 8608113965		BT3-138-05/18
30	1	61330241R	Short block				
31	1	61210137	Complete cylinder	SN 8608113966			BT3-138-05/18
32	1	61210136	Piston assy Ø38	SN 8608113966			BT3-138-05/18
33	1	61330226R	Crankshaft	SN 8608113966			BT3-138-05/18
34	1	61330119R	Muffler cover				
35	1	61330126R	Complete muffler KAT EURO 2				
36	2	3801065R	Screw				
38	2	3819036R	Washer				
38	2	3916006R	Washer				



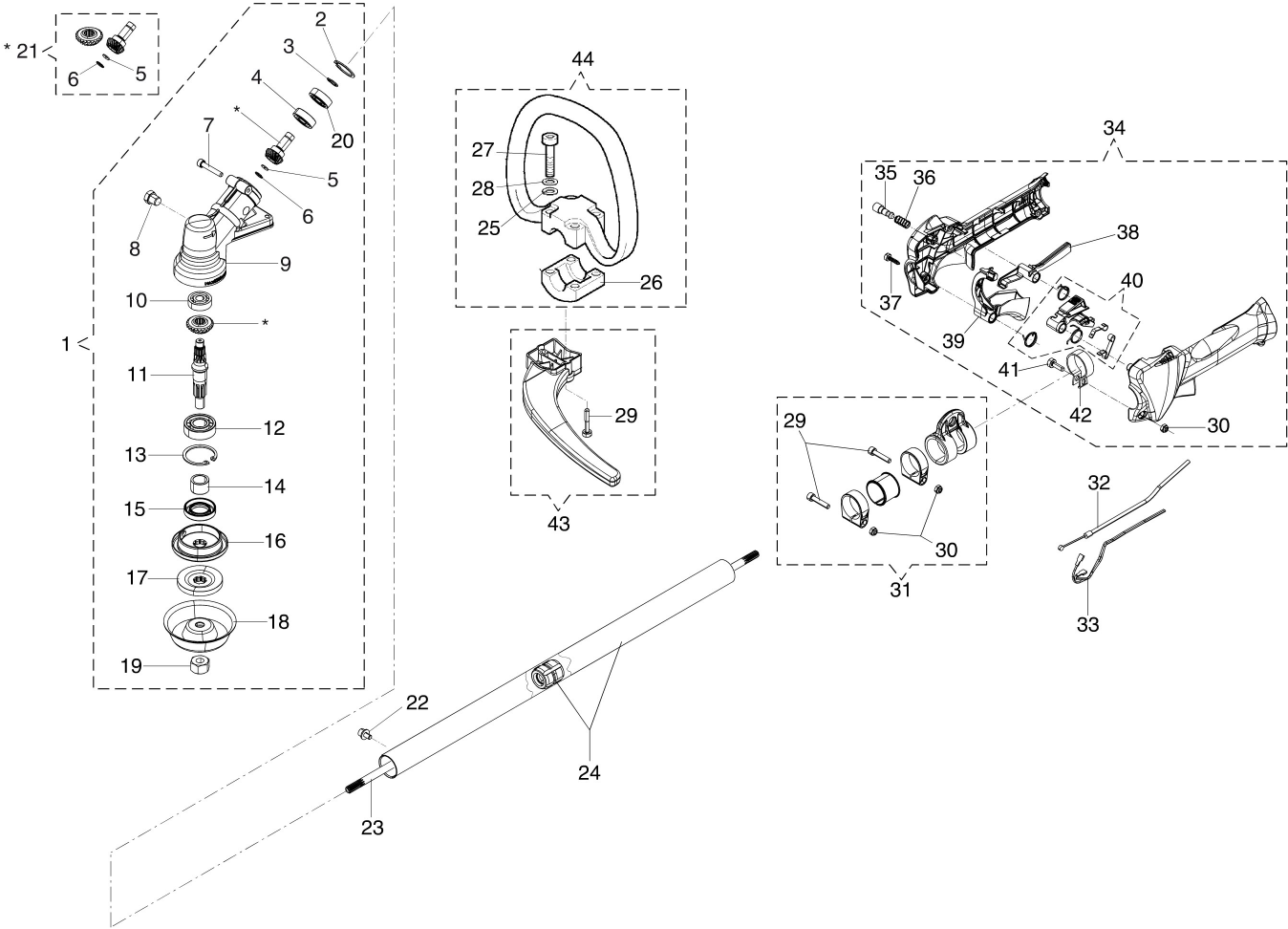
## Illustration Ignition system

Ref.Nu	Qty	Part number	Description	Validity from	Validity till	Notes	Bulletin
1	1	61332015R	Starter assy				
2	1	61330197	Clutch driver				
3	2	3064010R	Washer				
4	2	4191017AR	Spring				
5	2	3024007R	Ring				
6	2	61350145R	Pawl				
7	1	3818011AR	Washer				
8	1	3912009	Nut				
9	1	50160024	Screw				
10	1	61350204AR	Sprocket				
11	1	61350203BR	Spring				
12	1	61350139R	Starter pulley				
13	1	004000132R	Spring				
14	1	072700089R	Bushing				
15	1	4098073R	Starter rope				
16	1	61200015R	Starter handle				
17	9	3801010R	Screw				
18	1	61250015CR	Ignition coil				
19	1	50050127	Spring				
20	1	61200012AR	Spark plug cap				
21	1	61250282AR	Cable				
22	1	3901082R	Screw				
23	1	3819006R	Washer				
24	1	3916006R	Washer				
25	4	3893060R	Screw				
26	1	4191153BR	Clutch				
27	1	61200296R	Cover				
28	2	61200192AR	Adaptor				
29	2	3914003R	Nut				
30	2	3801015R	Screw				
31	1	4196038R	Bushing				
32	1	4196037R	Sleeve				
33	1	3035042R	Bearing				
34	1	3025022R	Seeger				
35	1	61200298R	Starter case				
36	1	61250014AR	Flywheel				
37	1	3024015R	Ring				
38	1	4191030R	Clutch drum				
39	2	4191027FR	Pin				
40	1	4191028R	Spring				



## Illustration Tank and air filter

Ref.Nu	Qty	Part number	Description	Validity from	Validity till	Notes	Bulletin
1	1	61200019AR	Gasket				
2	1	61200198	Insulator				
3	2	3801015R	Screw				
4	2	3891067R	Screw				
5	1	61200196AR	Gasket				
6	1	2318987BR	Carburetor WT-1099				EI02-02_22
7	1	61380013AR	Air filter				
8	1	61330131	Filter cover kit		S/N 8609125000		BT3-142-04/20
8	1	61330249	Filter cover kit	S/N 8609125001			BT3-142-04/20
9	1	61330135AR	Complete tank				
10	1	4098377R	Band				
11	1	61250228R	Tube				
12	1	3073014AR	Tube				
13	1	4161211R	Bush				
14	1	61400367R	Breather valve				
15	1	61250228R	Tube				
16	1	61372003R	Tank cap				
17	1	61070006R	Gasket				
18	1	61400322R	Fuel filter				
19	1	61200238AR	Guard				
20	4	3819006R	Washer				
21	4	3918005R	Washer				
22	2	3833073R	Washer				
23	4	3960087AR	Screw				
24	1	3891048R	Screw				
25	1	3918005R	Washer				
26	1	61380074AR	Starter lever				
27	2	3916005R	Washer				
28	4	61200128R	Spacer				
29	4	3916008R	Washer				
30	4	61200129R	Spring				
31	4	3801016R	Screw				
32	1	61332050R	Air filter support set	S/N 8609125001			BT3-142-04/20
32	1	-	Not available for this product		S/N 8609125000		BT3-142-04/20
33	1	61202038BR	Gasket set				
34	1	61330040AR	Screw				
35	1	61350155R	Flange				
36	1	61280105	Band				



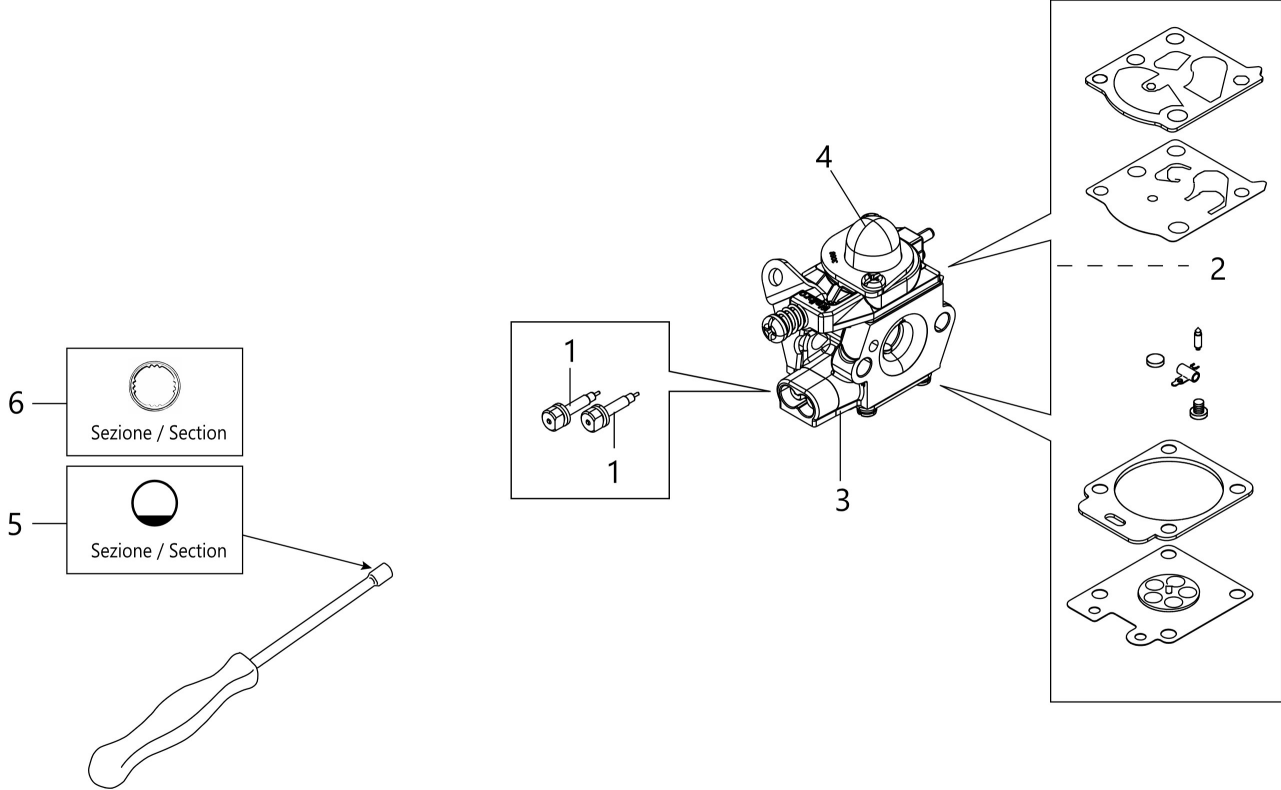


## Illustration Transmission

Ref.Nu	Qty	Part number	Description	Validity from	Validity till	Notes	Bulletin
1	1	61250287A	Bevel gear Ø28				
2	1	3025019R	Ring				
3	1	3024012R	Snap ring				
4	1	3034019R	Bearing				
5	1	4138311A	Ring				
6	1	3025009	Ring				
7	1	3901016	Screw				
8	1	61040071R	Cap				
9	1	61040144R	Gear case				
10	1	3034218R	Bearing				
11	1	61250054R	Pin				
12	1	3034012R	Bearing				
13	1	3025022R	Seeger				
14	1	61040066R	Spacer				
15	1	3050018R	Seal ring				
16	1	61040145R	Hub				
17	1	4179089R	Flange				
18	1	61110074AR	Guard				
19	1	61110075R	Nut				
20	1	3035023R	Bearing				
21	1	61040133A	Bevel gear set				
22	1	3901008R	Screw				
23	1	61202109R	Shaft				
24	1	61252049R	Tube Ø28				
25	4	3918010R	Washer				
26	1	61040061AR	Clamp				
27	4	3801017R	Screw				
28	4	3819006R	Washer				
29	4	3801015R	Screw				
30	3	3914003R	Nut				
31	1	4179195R	Band				
32	1	61380059R	Throttle cable				
33	1	61380058BR	Cable				
34	1	61330198	Complete handle				
35	1	56550185R	Button				
36	1	4100098BR	Spring				
37	4	3893016AR	Screw				
38	1	61380055AR	Lever				
39	1	61380056R	Throttle lever				
40	1	61380096	Lever group				
41	1	3891038R	Screw				

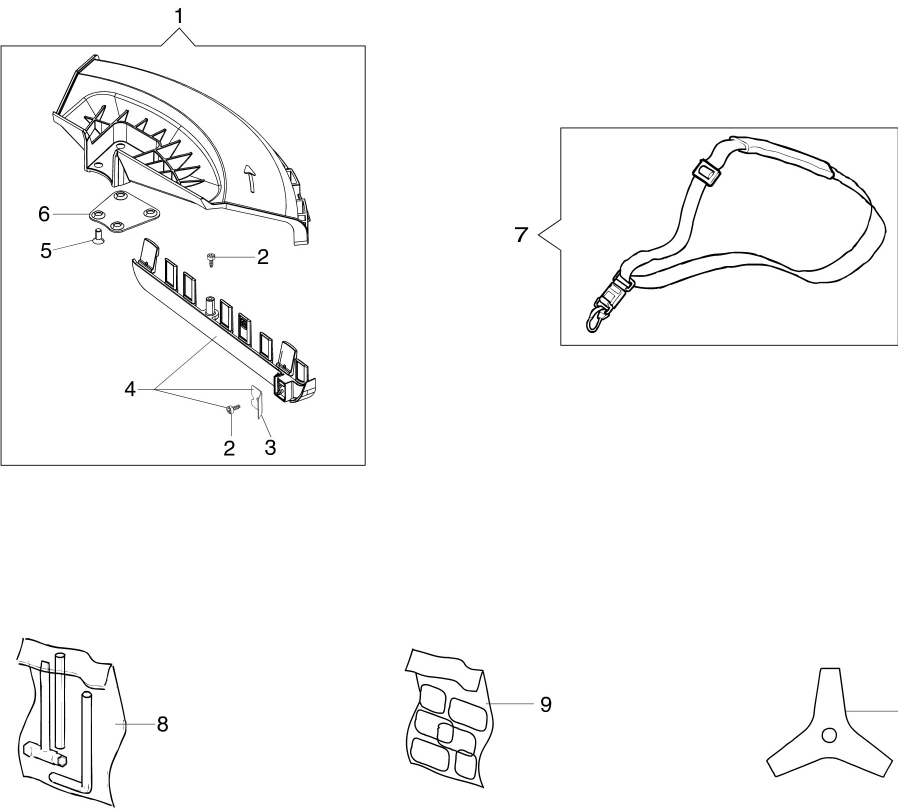
Illustration Transmission

Ref.Nu	Qty	Part number	Description	Validity from	Validity till	Notes	Bulletin
42	1	61040055	Band				
43	1	61042026R	Guard				
44	1	61042039R	Handle				



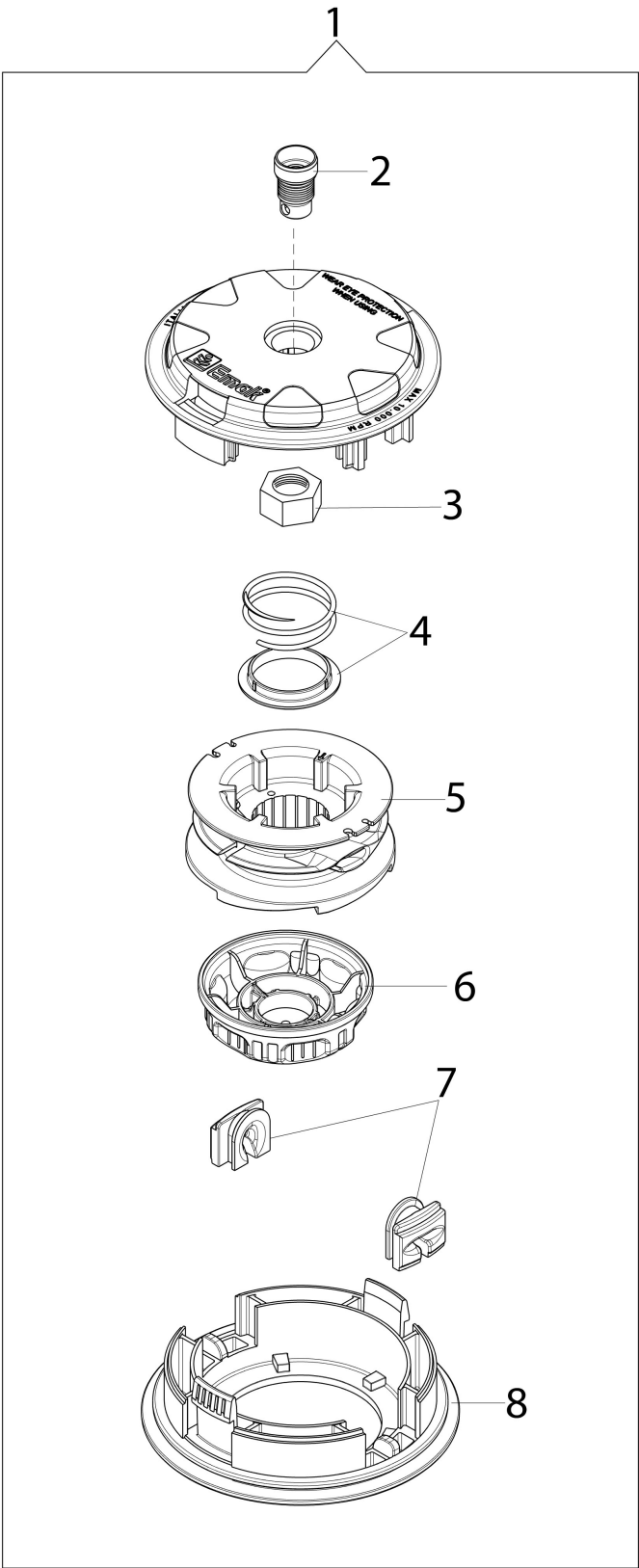
## Illustration Carburettor WT-1099

Ref.Nu	Qty	Part number	Description	Validity from	Validity till	Notes	Bulletin
1	2	2318667R	Adjust. screw				
2	1	2318671	Repair kit				
3	1	2318987BR	Carburetor WT-1099				EI02-02_22
4	1	2318572	Primer pump				
5	1	3052036R	Special screwdriver "D-style" type				
6	1	2304001R	Special screwdriver KNURL-STYLE				EI02-02_22



## Illustration Accessories

Ref.Nu	Qty	Part number	Description	Validity from	Validity till	Notes	Bulletin
1	1	61330235	Guard kit				
2	2	3960032R	Screw				
3	1	4174275R	Blade				
4	1	61330252	Skirt w/blade				
5	4	3802004DR	Screw				
6	1	4174278R	Plate				
7	1	4160463AR	Single harness				
8	1	61012010R	Tool kit				
9	1	61330202	Labels kit				
10	1	4095673BR	3-tooth blade				



## Illustration Illustrated part list (Head "Load & Go" D.130)

Ref.Nu	Qty	Part number	Description	Validity from	Validity till	Notes	Bulletin
1	1	63129007	Load & Go nylon head			Easy&LongLife	
1	1	63129014	Head Load&Go			ExtraLife	
2	1	63120041R	Insert				
3	1	63120040R	Nut				
4	1	63120031R	Kit spring				
5	1	63120020AR	Nylon spool				
6	1	63120007AR	Knob			Easy&LongLife	
6	1	63120030AR	Knob			ExtraLife	
7	2	63120001R	Bushing				
8	1	63120005R	Cover				